

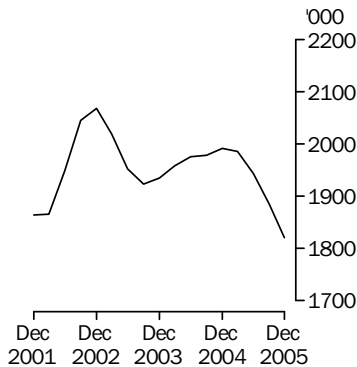
# LIVESTOCK PRODUCTS

AUSTRALIA

EMBARGO: 11.30AM (CANBERRA TIME) TUES 14 FEB 2006

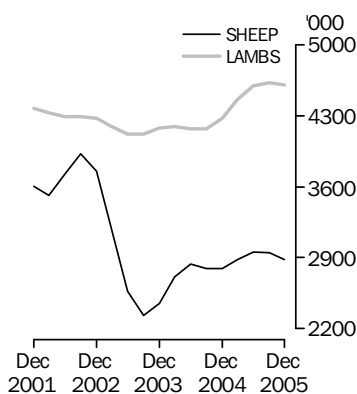
## Cattle slaughtering's

Excluding calves  
Trend



## Sheep and lamb slaughtering's

Trend



## KEY FIGURES

### TREND ESTIMATES

	Dec Qtr 2004	Sep Qtr 2005	Dec Qtr 2005
	'000	'000	'000
Number slaughtered			
Cattle	1 991.6	1 883.6	1 819.9
Calves	214.2	207.1	210.5
Sheep	2 790.0	2 945.4	2 878.4
Lambs	4 274.3	4 626.9	4 604.1
Pigs	1 335.2	1 333.3	1 338.1
Chickens	108 963.5	109 030.3	109 825.4

	Dec Qtr 2004	Sep Qtr 2005	Dec Qtr 2005
	tonnes	tonnes	tonnes
Meat produced			
Beef	532 081	509 304	494 900
Veal	7 197	7 013	7 229
Mutton	57 958	60 884	59 488
Lamb	86 879	94 957	93 803
Pig meat	97 218	96 862	96 985
Chicken meat	185 350	191 080	189 501
Wool receivals	117 103	120 713	117 447

	Sep Qtr 2004	Jun Qtr 2005	Sep Qtr 2005
	ML	ML	ML
Whole milk intake by factories	2 494	2 586	2 585

## KEY POINTS

### TREND ESTIMATES

- In December quarter 2005, the trend estimate for the number of cattle slaughtered fell by 3% to 1.8 million, the lowest quarterly trend estimate since December quarter 1996.
- In December quarter 2005, the trend estimate for the number of calves slaughtered rose by 2% to 211,000, the first significant quarterly rise since December 2002.
- In December quarter 2005, the trend estimate for sheep slaughtered fell by 2% to 2.9 million, the lowest quarterly trend estimate since December quarter 2004.
- In December quarter 2005, the trend estimate for pigs slaughtered remained steady at 1.3 million.

## INQUIRIES

For further information about these and related statistics, contact the National Information and Referral Service on 1300 135 070 or Frank Costin on Hobart (03) 6222 5838.

# NOTES

## FORTHCOMING ISSUES

*ISSUE (Quarter)*

*RELEASE DATE*

March 2006

16 May 2006

June 2006

14 August 2006

.....

## CHANGES IN THIS ISSUE

There are no changes in this issue.

## FORTHCOMING CHANGES

There are no forthcoming changes.

.....

## ABBREVIATIONS

ABS Australian Bureau of Statistics

ML megalitre

t tonne

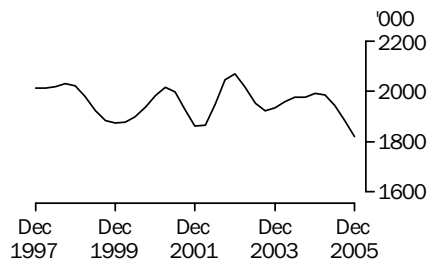
UHT ultra heat treated

Dennis Trewin

Australian Statistician

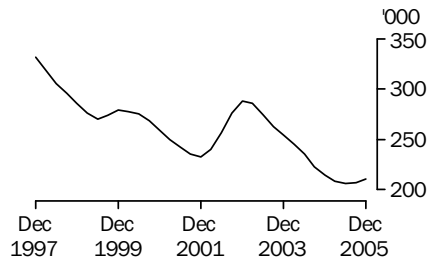
## LIVESTOCK SLAUGHTERED TREND

### CATTLE (EXCLUDING CALVES)



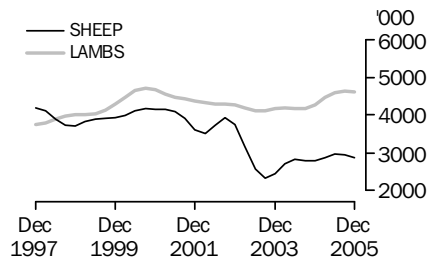
The trend estimate for the number of cattle slaughtered in December quarter 2005 fell by 3% to 1.8 million.

### CALVES



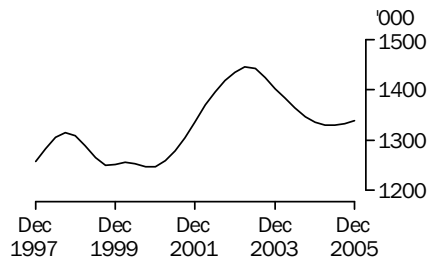
The trend estimate for the number of calves slaughtered in December quarter 2005 rose by 2% to 211,000.

### SHEEP AND LAMBS



In December quarter 2005, the trend estimate for the number of sheep slaughtered decreased by 2% to 2.9 million. The number of lambs slaughtered decreased slightly to 4.6 million.

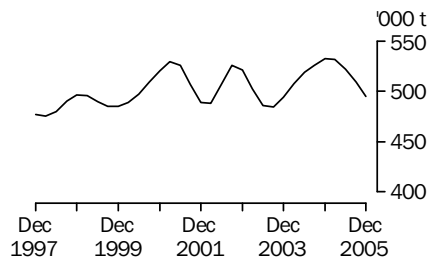
### PIGS



In December quarter 2005, the trend estimate for the number of pigs slaughtered remained steady at 1.3 million.

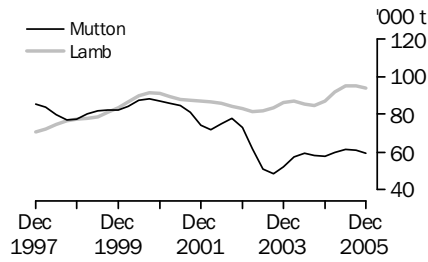
## MEAT PRODUCTION TREND

### BEEF



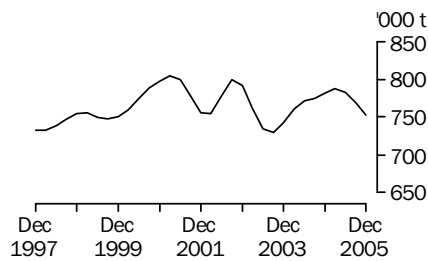
In December quarter 2005, the trend estimate for beef production fell by 3% to 495,000 tonnes.

### MUTTON AND LAMB



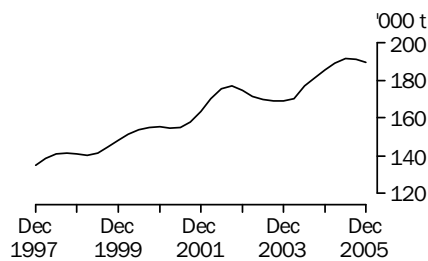
In December quarter 2005, the trend estimate for mutton production decreased by 2% to 59,500 tonnes. The trend estimate for lamb production decreased slightly to 93,800 tonnes.

### TOTAL RED MEAT



The trend estimate for red meat production fell by 2% to 752,000 tonnes in December quarter 2005.

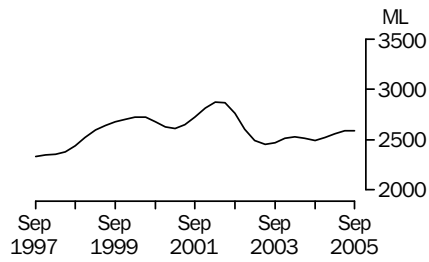
### CHICKEN MEAT



The trend estimate for chicken meat production in December quarter 2005 fell slightly to 190,000 tonnes.

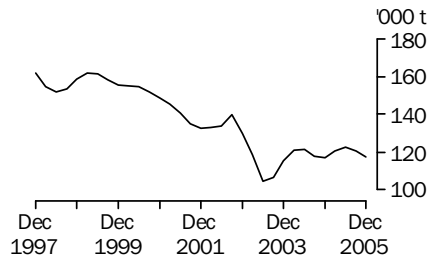
## LIVESTOCK PRODUCTS TREND

### WHOLE MILK INTAKE BY FACTORIES



The trend estimate for whole milk intake by factories in September quarter 2005 remained steady at 2.6 billion litres.

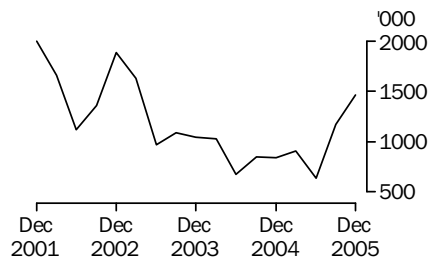
### BROKERS AND DEALERS RECEIVALS OF TAXABLE WOOL



The trend estimate for wool receivals by brokers and dealers in December quarter 2005 fell by 3% to 117,000 tonnes.

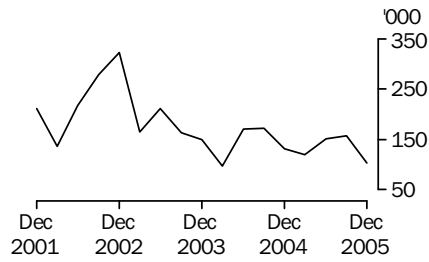
# LIVESTOCK EXPORTS ORIGINAL

## EXPORTS OF LIVE SHEEP



Live sheep exports rose by 25% to 1.5 million in December quarter 2005. A slight fall in unit value (to \$69.18) saw gross value of live sheep exports increase by 23% to \$101 million.

## EXPORTS OF LIVE CATTLE



In December quarter 2005, live cattle exports fell by 35% to 103,000. An 18% increase in unit value (to \$719.55) saw the gross value of live cattle exports decrease by 23% to \$73.9 million.

## LIST OF TABLES

page

### OVERVIEW

<b>1</b>	Livestock slaughtered, Australia	9
<b>2</b>	Livestock products, Australia	10

### LIVESTOCK SLAUGHTERINGS

<b>3</b>	Number of livestock slaughtered, bulls, bullocks and steers, by state	11
<b>4</b>	Number of livestock slaughtered, cows and heifers, by state	12
<b>5</b>	Number of livestock slaughtered, total cattle (excluding calves), by state	13
<b>6</b>	Number of livestock slaughtered, calves, by state	14
<b>7</b>	Number of livestock slaughtered, sheep, by state	15
<b>8</b>	Number of livestock slaughtered, lambs, by state	16
<b>9</b>	Number of livestock slaughtered, pigs, by state	17
<b>10</b>	Number of chickens slaughtered, by state	18
<b>11</b>	Number of livestock slaughtered, financial year, by state	19

### MEAT PRODUCED

<b>12</b>	Red meat produced, beef, by state	20
<b>13</b>	Red meat produced, veal, by state	21
<b>14</b>	Red meat produced, mutton, by state	22
<b>15</b>	Red meat produced, lamb, by state	23
<b>16</b>	Red meat produced, pig meat, by state	24
<b>17</b>	Total red meat produced, by state	25
<b>18</b>	Chicken meat produced, by state	26
<b>19</b>	Meat produced, financial year, by state	27

### EXPORTS OF MEAT AND LIVE ANIMALS

<b>20</b>	Exports of fresh, frozen and processed meat, Australia	28
<b>21</b>	Exports of live sheep and cattle, Australia	29

### LIVESTOCK PRODUCTS

<b>22</b>	Whole milk intake by factories, by state	30
<b>23</b>	Market milk sales by factories, by state	31
<b>24</b>	Brokers and dealers receivals of taxable wool, by state	32
<b>25</b>	Livestock products, financial year, by state	33





## LIVESTOCK SLAUGHTERED, Australia(a): All Series

<i>Quarter</i>	<i>Bulls, bullocks and steers</i>	<i>Cows and heifers</i>	<i>Cattle (excluding calves)</i>	<i>Calves</i>	<i>Sheep</i>	<i>Lambs</i>	<i>Pigs</i>	<i>Chickens</i>
	'000	'000	'000	'000	'000	'000	'000	'000
ORIGINAL								
<b>2004</b>								
September	1 135.9	953.4	2 089.3	413.9	2 345.3	3 597.7	1 360.1	106 408.0
December	1 105.2	829.4	1 934.6	151.8	3 014.7	4 554.6	1 303.7	118 723.1
<b>2005</b>								
March	1 007.6	807.5	1 815.2	98.1	3 139.4	4 362.4	1 297.5	104 658.7
June	1 138.1	1 008.4	2 146.5	204.1	2 943.2	4 815.8	1 377.8	107 851.1
September	1 102.8	772.0	1 874.7	376.0	2 403.0	4 333.0	1 335.9	108 849.6
December	1 045.7	761.2	1 806.9	145.0	3 150.8	4 716.7	1 322.3	111 539.9
SEASONALLY ADJUSTED								
<b>2004</b>								
September	1 099.0	930.4	2 029.5	220.5	2 763.8	3 872.1	1 343.0	107 826.8
December	1 074.6	880.9	1 955.4	224.2	2 730.7	4 358.8	1 331.5	115 407.2
<b>2005</b>								
March	1 095.7	874.8	1 970.5	195.4	2 795.4	4 364.5	1 338.4	105 163.6
June	1 115.6	905.4	2 020.9	215.4	3 177.4	4 687.6	1 322.9	109 534.0
September	1 067.7	753.4	1 821.1	201.0	2 846.2	4 669.9	1 332.9	109 984.2
December	1 016.1	808.1	1 824.2	212.6	2 844.6	4 512.3	1 343.1	108 607.9
TREND								
<b>2004</b>								
September	1 068.0	909.6	1 977.7	223.1	2 794.2	4 171.9	1 347.1	108 427.6
December	1 091.0	900.6	1 991.6	214.2	2 790.0	4 274.3	1 335.2	108 963.5
<b>2005</b>								
March	1 103.1	883.0	1 986.1	208.5	2 879.1	4 461.3	1 329.8	108 826.9
June	1 092.6	851.2	1 943.8	206.1	2 958.9	4 593.2	1 330.2	108 639.2
September	1 068.5	815.1	1 883.6	207.1	2 945.4	4 626.9	1 333.3	109 030.3
December	1 037.5	782.4	1 819.9	210.5	2 878.4	4 604.1	1 338.1	109 825.4

(a) For more information refer to paragraphs 5, and 7 to 9 of the Explanatory Notes.

## LIVESTOCK PRODUCTS, Australia(a): All Series

Quarter	RED MEAT						Chicken meat tonnes	Whole milk intake by factories ML	Brokers and dealers receivals of taxable wool tonnes
	Beef tonnes	Veal tonnes	Mutton tonnes	Lamb tonnes	Pig meat tonnes	Total red meat tonnes			
ORIGINAL									
<b>2004</b>									
September	551 747	11 246	48 240	70 757	99 416	781 405	179 282	2 369	127 471
December	518 616	5 851	65 349	91 169	94 180	775 163	195 330	3 380	136 722
<b>2005</b>									
March	490 359	4 798	64 894	91 516	92 929	744 496	178 055	2 466	113 652
June	572 088	7 253	58 873	100 849	101 546	840 608	197 362	1 909	97 376
September	504 729	10 024	49 322	88 187	98 609	750 870	188 782	2 387	129 320
December	495 343	5 679	68 032	94 237	94 022	757 313	190 998	nya	135 655
SEASONALLY ADJUSTED									
<b>2004</b>									
September	543 637	7 659	56 858	76 875	97 190	782 219	181 234	2 504	114 412
December	518 816	7 534	57 021	88 335	97 918	769 624	189 143	2 462	116 161
<b>2005</b>									
March	532 763	6 324	58 266	90 862	96 740	784 955	180 963	2 578	117 806
June	535 429	7 223	65 876	96 836	96 289	801 653	199 466	2 650	130 468
September	497 531	6 857	58 478	95 866	97 586	756 318	189 805	2 518	117 138
December	495 567	7 262	59 104	91 451	96 620	750 004	186 178	nya	115 639
TREND									
<b>2004</b>									
September	526 101	7 656	58 034	84 430	98 024	774 245	181 237	2 494	117 763
December	532 081	7 197	57 958	86 879	97 218	781 333	185 350	2 518	117 103
<b>2005</b>									
March	531 752	6 903	59 841	91 806	96 885	787 187	189 231	2 560	120 498
June	522 174	6 868	61 340	94 897	96 843	782 122	191 313	2 586	122 650
September	509 304	7 013	60 884	94 957	96 862	769 020	191 080	2 585	120 713
December	494 900	7 229	59 488	93 803	96 985	752 405	189 501	nya	117 447

nya not yet available

(a) For more information refer to paragraphs 5 to 9 and 13 to 15 of the Explanatory Notes.

## NUMBER OF LIVESTOCK SLAUGHTERED (a), Bulls, bullocks and steers: All Series

Quarter	New South Wales	Victoria	Queensland	South Australia	Western Australia	Tasmania	Australia
	'000	'000	'000	'000	'000	'000	'000
ORIGINAL							
<b>2004</b>							
September	235.4	137.2	653.8	34.9	50.3	24.0	<b>1 135.9</b>
December	214.9	159.3	584.0	56.3	61.8	28.5	<b>1 105.2</b>
<b>2005</b>							
March	226.9	160.5	484.7	51.7	52.5	31.0	<b>1 007.6</b>
June	248.6	143.2	608.1	48.1	64.1	25.7	<b>1 138.1</b>
September	224.4	124.1	657.2	34.7	42.3	19.7	<b>1 102.8</b>
December	218.1	157.5	546.9	48.1	53.3	21.5	<b>1 045.7</b>
SEASONALLY ADJUSTED							
<b>2004</b>							
September	238.2	156.9	571.5	43.8	54.6	28.2	<b>1 099.0</b>
December	216.4	150.5	576.2	49.1	51.5	29.5	<b>1 074.6</b>
<b>2005</b>							
March	229.7	148.3	582.8	47.8	53.5	26.9	<b>1 095.7</b>
June	240.7	145.1	601.9	49.2	71.5	25.0	<b>1 115.6</b>
September	227.8	142.2	574.5	43.9	45.8	23.2	<b>1 067.7</b>
December	219.3	149.0	539.0	41.6	44.5	22.1	<b>1 016.1</b>
TREND							
<b>2004</b>							
September	213.1	157.5	560.0	44.8	51.6	28.8	<b>1 068.0</b>
December	221.7	152.3	578.3	47.4	54.5	28.6	<b>1 091.0</b>
<b>2005</b>							
March	230.3	147.2	591.0	48.8	58.5	27.1	<b>1 103.1</b>
June	232.9	145.2	587.2	47.4	58.2	25.1	<b>1 092.6</b>
September	229.9	145.0	572.9	44.8	53.2	23.3	<b>1 068.5</b>
December	223.0	145.9	553.3	42.6	46.1	22.2	<b>1 037.5</b>

(a) For more information refer to paragraphs 4, 5 and 7 of the Explanatory Notes.

## NUMBER OF LIVESTOCK SLAUGHTERED (a), Cows and heifers: All Series

Quarter	New South Wales	Victoria	Queensland	South Australia	Western Australia	Tasmania	Australia
	'000	'000	'000	'000	'000	'000	'000
ORIGINAL							
<b>2004</b>							
September	206.5	238.0	377.2	37.0	71.6	22.1	<b>953.4</b>
December	195.8	222.2	281.1	42.6	64.9	21.8	<b>829.4</b>
<b>2005</b>							
March	169.9	210.1	285.9	43.6	73.6	23.5	<b>807.5</b>
June	202.5	245.2	415.7	44.8	71.7	27.5	<b>1 008.4</b>
September	136.9	188.4	332.6	25.6	63.8	23.7	<b>772.0</b>
December	162.8	198.6	272.3	40.9	61.1	24.4	<b>761.2</b>
SEASONALLY ADJUSTED							
<b>2004</b>							
September	211.7	242.1	344.3	42.5	72.5	26.2	<b>930.4</b>
December	193.1	221.7	322.4	42.2	65.6	23.8	<b>880.9</b>
<b>2005</b>							
March	180.7	213.1	343.0	42.0	69.0	22.8	<b>874.8</b>
June	189.2	238.1	346.4	41.2	75.0	22.7	<b>905.4</b>
September	139.9	191.6	303.7	29.7	64.5	27.6	<b>753.4</b>
December	160.2	198.6	312.7	40.3	62.1	26.9	<b>808.1</b>
TREND							
<b>2004</b>							
September	192.4	234.7	340.2	42.0	69.9	25.2	<b>909.6</b>
December	193.9	227.5	335.8	42.7	69.4	23.9	<b>900.6</b>
<b>2005</b>							
March	186.4	222.7	336.8	41.3	70.0	23.2	<b>883.0</b>
June	172.7	216.3	331.8	38.3	69.6	24.1	<b>851.2</b>
September	160.2	207.1	320.4	36.3	67.1	25.8	<b>815.1</b>
December	150.8	197.1	307.0	35.9	63.5	27.5	<b>782.4</b>

(a) For more information refer to paragraphs 4, 5 and 7 of the Explanatory Notes.

## NUMBER OF LIVESTOCK SLAUGHTERED(a), Total cattle (excluding calves): All Series

Quarter	New South Wales	Victoria	Queensland	South Australia	Western Australia	Tasmania	Australia
	'000	'000	'000	'000	'000	'000	'000
ORIGINAL							
<b>2004</b>							
September	441.8	375.1	1 030.9	72.0	122.0	46.1	<b>2 089.3</b>
December	410.7	381.6	865.1	98.9	126.6	50.3	<b>1 934.6</b>
<b>2005</b>							
March	396.8	370.6	770.6	95.3	126.1	54.5	<b>1 815.2</b>
June	451.1	388.4	1 023.8	92.9	135.8	53.1	<b>2 146.5</b>
September	361.3	312.5	989.8	60.3	106.1	43.4	<b>1 874.7</b>
December	380.9	356.1	819.2	89.0	114.4	45.9	<b>1 806.9</b>
SEASONALLY ADJUSTED							
<b>2004</b>							
September	449.9	399.0	915.8	86.3	127.1	54.3	<b>2 029.5</b>
December	409.5	372.3	898.6	91.3	117.0	53.3	<b>1 955.4</b>
<b>2005</b>							
March	410.4	361.4	925.8	89.8	122.5	49.7	<b>1 970.5</b>
June	429.9	383.2	948.2	90.5	146.5	47.7	<b>2 020.9</b>
September	367.7	333.8	878.2	73.6	110.3	50.7	<b>1 821.1</b>
December	379.5	347.6	851.7	81.9	106.6	49.0	<b>1 824.2</b>
TREND							
<b>2004</b>							
September	405.5	392.3	900.2	86.7	121.4	54.1	<b>1 977.7</b>
December	415.6	379.8	914.1	90.1	123.9	52.5	<b>1 991.6</b>
<b>2005</b>							
March	416.7	369.9	927.9	90.1	128.5	50.3	<b>1 986.1</b>
June	405.7	361.5	919.0	85.8	127.9	49.2	<b>1 943.8</b>
September	390.0	352.1	893.3	81.1	120.3	49.2	<b>1 883.6</b>
December	373.8	343.0	860.3	78.4	109.6	49.6	<b>1 819.9</b>

(a) For more information refer to paragraphs 4, 5 and 7 of the Explanatory Notes.

## NUMBER OF LIVESTOCK SLAUGHTERED (a), Calves: All Series

Quarter	New South Wales	Victoria	Queensland	South Australia	Western Australia	Tasmania	Australia
	'000	'000	'000	'000	'000	'000	'000
ORIGINAL							
<b>2004</b>							
September	50.8	307.9	20.1	1.5	1.2	32.2	<b>413.9</b>
December	45.7	80.7	15.0	1.0	1.1	8.0	<b>151.8</b>
<b>2005</b>							
March	49.1	28.7	17.2	1.2	0.9	0.9	<b>98.1</b>
June	55.6	121.6	21.1	1.6	1.1	3.0	<b>204.1</b>
September	50.5	277.2	16.5	1.3	1.1	29.2	<b>376.0</b>
December	48.0	73.7	14.0	0.9	1.0	7.3	<b>145.0</b>
SEASONALLY ADJUSTED							
<b>2004</b>							
September	51.7	136.2	19.6	1.4	1.1	10.9	<b>220.5</b>
December	49.9	135.2	16.7	1.4	1.1	11.6	<b>224.2</b>
<b>2005</b>							
March	48.4	132.9	17.4	1.3	1.1	11.7	<b>195.4</b>
June	51.2	130.5	19.2	1.3	1.1	10.9	<b>215.4</b>
September	51.3	123.1	16.2	1.2	1.0	9.9	<b>201.0</b>
December	52.2	122.4	15.6	1.2	1.0	10.3	<b>212.6</b>
TREND							
<b>2004</b>							
September	50.5	138.6	18.2	1.5	1.1	11.9	<b>223.1</b>
December	49.7	134.9	17.9	1.3	1.1	11.5	<b>214.2</b>
<b>2005</b>							
March	49.7	132.4	17.8	1.3	1.1	11.3	<b>208.5</b>
June	50.3	129.1	17.6	1.3	1.0	10.9	<b>206.1</b>
September	51.4	125.1	17.0	1.2	1.0	10.3	<b>207.1</b>
December	52.3	122.0	15.8	1.2	1.0	10.1	<b>210.5</b>

(a) For more information refer to paragraphs 4, 5 and 7 of the Explanatory Notes.

## NUMBER OF LIVESTOCK SLAUGHTERED (a), Sheep: All Series

Quarter	New South Wales	Victoria	Queensland	South Australia	Western Australia	Tasmania	Australia
	'000	'000	'000	'000	'000	'000	'000
ORIGINAL							
<b>2004</b>							
September	715.1	672.7	220.1	213.1	479.1	45.2	<b>2 345.3</b>
December	934.0	886.6	226.6	264.7	606.0	96.7	<b>3 014.7</b>
<b>2005</b>							
March	933.6	945.3	227.2	284.7	651.6	97.1	<b>3 139.4</b>
June	965.7	960.9	245.0	216.6	468.5	86.5	<b>2 943.2</b>
September	697.6	791.2	208.0	218.2	442.1	45.8	<b>2 403.0</b>
December	933.9	1 007.1	233.3	337.9	576.7	61.9	<b>3 150.8</b>
SEASONALLY ADJUSTED							
<b>2004</b>							
September	815.0	815.5	223.5	244.8	559.2	70.8	<b>2 763.8</b>
December	867.1	801.2	225.1	225.1	531.8	93.2	<b>2 730.7</b>
<b>2005</b>							
March	890.7	828.2	225.6	251.0	535.7	78.5	<b>2 795.4</b>
June	963.0	1 035.1	245.0	265.1	591.0	80.8	<b>3 177.4</b>
September	803.9	960.7	211.4	250.5	521.5	71.7	<b>2 846.2</b>
December	862.9	910.4	230.5	285.9	503.8	59.4	<b>2 844.6</b>
TREND							
<b>2004</b>							
September	877.6	822.2	218.7	240.4	555.2	74.8	<b>2 794.2</b>
December	871.2	822.1	226.0	240.5	549.6	81.9	<b>2 790.0</b>
<b>2005</b>							
March	893.1	880.3	230.7	244.9	551.0	84.5	<b>2 879.1</b>
June	897.2	946.3	229.7	255.7	552.0	78.4	<b>2 958.9</b>
September	869.8	967.5	226.9	266.0	537.3	70.3	<b>2 945.4</b>
December	841.5	953.6	224.3	274.6	513.2	63.8	<b>2 878.4</b>

(a) For more information refer to paragraphs 4, 5 and 7 of the Explanatory Notes.

## NUMBER OF LIVESTOCK SLAUGHTERED (a), Lambs: All Series

Quarter	New South Wales	Victoria	Queensland	South Australia	Western Australia	Tasmania	Australia
	'000	'000	'000	'000	'000	'000	'000
ORIGINAL							
<b>2004</b>							
September	892.5	1 393.7	74.7	559.7	577.7	99.5	<b>3 597.7</b>
December	1 049.2	1 839.6	72.1	853.9	639.4	100.4	<b>4 554.6</b>
<b>2005</b>							
March	1 057.0	1 692.8	62.4	870.8	575.6	103.7	<b>4 362.4</b>
June	1 111.8	1 861.0	78.0	951.8	674.0	139.3	<b>4 815.8</b>
September	966.9	1 755.0	70.2	694.2	705.4	141.3	<b>4 333.0</b>
December	1 047.5	1 947.5	65.4	843.5	695.8	117.1	<b>4 716.7</b>
SEASONALLY ADJUSTED							
<b>2004</b>							
September	904.3	1 442.7	68.0	708.7	617.3	96.2	<b>3 872.1</b>
December	1 046.3	1 716.4	77.2	813.9	597.3	107.9	<b>4 358.8</b>
<b>2005</b>							
March	1 050.8	1 757.5	70.0	802.3	587.9	109.9	<b>4 364.5</b>
June	1 107.3	1 858.4	72.3	884.6	664.9	127.2	<b>4 687.6</b>
September	980.6	1 822.2	64.3	880.4	750.9	136.6	<b>4 669.9</b>
December	1 043.2	1 815.6	69.7	803.4	653.0	125.8	<b>4 512.3</b>
TREND							
<b>2004</b>							
September	1 022.8	1 670.5	68.3	738.4	619.6	102.2	<b>4 171.9</b>
December	1 046.1	1 713.8	70.2	778.1	597.9	104.4	<b>4 274.3</b>
<b>2005</b>							
March	1 063.9	1 775.5	70.5	833.7	616.9	114.4	<b>4 461.3</b>
June	1 054.9	1 818.2	69.5	860.7	663.3	124.8	<b>4 593.2</b>
September	1 036.8	1 832.2	68.2	858.0	695.1	130.5	<b>4 626.9</b>
December	1 023.5	1 828.5	67.6	842.3	701.2	132.1	<b>4 604.1</b>

(a) For more information refer to paragraphs 4, 5 and 7 of the Explanatory Notes.



## NUMBER OF LIVESTOCK SLAUGHTERED (a), Pigs: All Series

Quarter	New South Wales	Victoria	Queensland	South Australia	Western Australia	Tasmania	Australia
	'000	'000	'000	'000	'000	'000	'000
ORIGINAL							
<b>2004</b>							
September	415.9	235.2	323.1	201.3	170.6	11.6	<b>1 360.1</b>
December	392.5	210.3	314.6	218.5	152.6	13.3	<b>1 303.7</b>
<b>2005</b>							
March	382.7	198.6	318.1	229.8	156.8	9.9	<b>1 297.5</b>
June	423.5	203.3	329.5	245.2	163.7	10.8	<b>1 377.8</b>
September	424.6	181.8	314.1	250.5	152.8	10.4	<b>1 335.9</b>
December	421.6	192.2	302.7	251.4	141.6	11.1	<b>1 322.3</b>
SEASONALLY ADJUSTED							
<b>2004</b>							
September	413.8	232.1	319.7	204.0	167.5	11.2	<b>1 343.0</b>
December	398.7	210.8	322.9	232.7	160.4	12.0	<b>1 331.5</b>
<b>2005</b>							
March	400.3	206.3	325.7	231.5	159.2	10.8	<b>1 338.4</b>
June	405.0	195.2	316.6	229.2	156.7	11.2	<b>1 322.9</b>
September	420.5	184.0	314.4	251.4	149.9	10.3	<b>1 332.9</b>
December	427.1	192.6	309.2	269.6	149.1	10.0	<b>1 343.1</b>
TREND							
<b>2004</b>							
September	411.1	228.2	321.4	210.9	165.2	11.3	<b>1 347.1</b>
December	402.4	216.2	322.6	222.7	162.3	11.4	<b>1 335.2</b>
<b>2005</b>							
March	400.2	203.5	322.4	230.4	158.9	11.3	<b>1 329.8</b>
June	407.5	194.9	318.8	238.0	155.3	10.9	<b>1 330.2</b>
September	417.6	189.9	313.9	249.7	151.8	10.4	<b>1 333.3</b>
December	426.6	186.8	309.5	264.6	148.3	10.1	<b>1 338.1</b>

(a) For more information refer to paragraphs 4, 5 and 7 of the Explanatory Notes.

## NUMBER OF CHICKENS SLAUGHTERED(a): All Series

Quarter	New South Wales	Victoria	Queensland	South Australia	Western Australia	Australia
	'000	'000	'000	'000	'000	'000
ORIGINAL						
<b>2004</b>						
September	37 001.4	29 496.7	20 190.6	np	np	<b>106 408.0</b>
December	40 401.4	33 740.6	22 856.1	np	np	<b>118 723.1</b>
<b>2005</b>						
March	34 263.7	30 463.9	20 383.2	np	np	<b>104 658.7</b>
June	36 306.7	31 025.2	20 656.3	np	np	<b>107 851.1</b>
September	37 957.7	29 610.1	21 212.8	np	np	<b>108 849.6</b>
December	37 118.0	31 130.2	22 124.3	np	np	<b>111 539.9</b>
SEASONALLY ADJUSTED						
<b>2004</b>						
September	37 123.7	30 124.7	20 598.5	np	np	<b>107 826.8</b>
December	39 822.4	32 975.6	21 513.9	np	np	<b>115 407.2</b>
<b>2005</b>						
March	34 640.2	30 229.3	20 757.2	np	np	<b>105 163.6</b>
June	36 746.8	31 211.0	21 353.9	np	np	<b>109 534.0</b>
September	37 619.8	30 746.8	21 280.0	np	np	<b>109 984.2</b>
December	36 807.6	30 280.6	20 987.0	np	np	<b>108 607.9</b>
TREND						
<b>2004</b>						
September	37 958.9	29 960.9	20 321.7	np	np	<b>108 427.6</b>
December	37 482.4	30 171.4	20 975.0	np	np	<b>108 963.5</b>
<b>2005</b>						
March	36 808.7	30 535.6	21 277.9	np	np	<b>108 826.9</b>
June	36 559.0	30 756.7	21 195.0	np	np	<b>108 639.2</b>
September	36 837.5	30 747.6	21 174.0	np	np	<b>109 030.3</b>
December	37 518.6	30 556.9	21 173.6	np	np	<b>109 825.4</b>

np not available for publication but included in totals where applicable, unless otherwise indicated

(a) For more information refer to paragraphs 8 and 9 of the Explanatory Notes.

## NUMBER OF LIVESTOCK SLAUGHTERED (a): Original

Financial year	New South Wales '000	Victoria '000	Queensland '000	South Australia '000	Western Australia '000	Tasmania '000	Australia '000
<b>BULLS, BULLOCKS AND STEERS</b>							
2002-03	961.6	630.0	1 993.7	166.6	173.4	79.9	<b>4 006.3</b>
2003-04	794.0	613.5	2 049.9	178.6	200.4	98.3	<b>3 935.7</b>
2004-05	925.8	600.2	2 330.6	191.1	228.7	109.2	<b>4 386.9</b>
<b>COWS AND HEIFERS</b>							
2002-03	968.9	1 020.5	1 521.6	192.5	255.9	112.9	<b>4 076.4</b>
2003-04	822.2	943.1	1 514.4	164.4	262.5	106.5	<b>3 817.2</b>
2004-05	774.6	915.5	1 359.8	168.0	281.8	94.9	<b>3 598.7</b>
<b>CATTLE (excluding calves)</b>							
2002-03	1 930.5	1 650.4	3 515.2	359.1	429.3	192.8	<b>8 082.7</b>
2003-04	1 616.1	1 556.6	3 564.2	342.9	462.9	204.7	<b>7 752.9</b>
2004-05	1 700.4	1 515.7	3 690.5	359.1	510.5	204.1	<b>7 985.6</b>
<b>CALVES</b>							
2002-03	246.1	749.3	92.1	11.0	5.3	41.2	<b>1 145.8</b>
2003-04	221.9	659.2	84.7	7.2	4.7	47.3	<b>1 025.8</b>
2004-05	201.2	539.0	73.3	5.3	4.3	44.1	<b>867.9</b>
<b>SHEEP</b>							
2002-03	5 282.2	3 641.2	1 142.0	1 431.8	1 771.8	388.3	<b>13 657.3</b>
2003-04	3 310.0	3 078.9	892.8	947.5	1 845.4	346.3	<b>10 420.7</b>
2004-05	3 548.4	3 465.4	918.9	979.1	2 205.2	325.6	<b>11 442.6</b>
<b>LAMBS</b>							
2002-03	4 388.8	6 904.8	340.3	2 841.1	2 021.0	374.0	<b>16 869.8</b>
2003-04	4 047.4	6 471.4	261.5	2 970.6	2 391.8	419.2	<b>16 561.8</b>
2004-05	4 110.4	6 787.1	287.2	3 236.2	2 466.7	442.9	<b>17 330.6</b>
<b>PIGS</b>							
2002-03	1 860.6	1 033.2	1 234.8	884.1	672.3	47.7	<b>5 741.7</b>
2003-04	1 751.1	973.1	1 318.1	820.9	674.4	44.2	<b>5 591.2</b>
2004-05	1 614.6	847.3	1 285.4	894.8	643.7	45.6	<b>5 339.2</b>
<b>CHICKENS</b>							
2002-03	149 917.0	117 892.0	75 149.3	np	np	np	<b>419 181.0</b>
2003-04	149 358.7	120 345.9	77 472.0	np	np	np	<b>423 742.0</b>
2004-05	147 973.2	124 726.5	84 086.2	np	np	np	<b>437 640.9</b>

np not available for publication but included in totals where applicable, unless otherwise indicated

(a) For more information refer to paragraphs 4, 5 and 7 to 9 of the Explanatory Notes.

Quarter	New South Wales	Victoria	Queensland	South Australia	Western Australia	Tasmania	Australia
	tonnes	tonnes	tonnes	tonnes	tonnes	tonnes	tonnes
ORIGINAL							
<b>2004</b>							
September	112 602	87 845	290 620	17 620	30 219	12 550	<b>551 747</b>
December	106 301	93 276	246 510	25 797	32 317	14 138	<b>518 616</b>
<b>2005</b>							
March	105 848	88 486	222 552	25 085	32 581	15 528	<b>490 359</b>
June	115 970	93 618	286 728	24 547	36 289	14 643	<b>572 088</b>
September	92 934	74 588	283 425	15 005	26 452	12 029	<b>504 729</b>
December	100 107	86 952	241 303	23 195	30 467	13 037	<b>495 343</b>
SEASONALLY ADJUSTED							
<b>2004</b>							
September	115 380	94 101	254 780	21 764	31 985	15 501	<b>543 637</b>
December	106 105	90 797	255 247	23 501	29 328	14 556	<b>518 816</b>
<b>2005</b>							
March	108 769	86 837	266 247	23 053	31 296	13 495	<b>532 763</b>
June	110 492	91 689	267 943	24 334	39 791	13 723	<b>535 429</b>
September	95 184	79 963	251 847	18 741	27 930	14 807	<b>497 531</b>
December	99 793	84 779	248 174	20 965	27 772	13 451	<b>495 567</b>
TREND							
<b>2004</b>							
September	104 063	93 814	253 048	22 107	30 488	15 004	<b>526 101</b>
December	107 674	91 413	259 145	23 163	31 438	14 485	<b>532 081</b>
<b>2005</b>							
March	108 550	89 046	264 137	23 442	33 277	14 002	<b>531 752</b>
June	105 559	86 805	262 433	22 437	33 534	13 921	<b>522 174</b>
September	101 318	84 673	256 292	21 052	31 514	14 033	<b>509 304</b>
December	97 612	83 212	248 527	20 132	28 389	14 032	<b>494 900</b>

(a) For more information refer to paragraphs 4 to 7 of the Explanatory Notes.

Quarter	New South Wales	Victoria	Queensland	South Australia	Western Australia	Tasmania	Australia
	tonnes	tonnes	tonnes	tonnes	tonnes	tonnes	tonnes
ORIGINAL							
<b>2004</b>							
September	3 252	6 293	949	50	63	627	<b>11 246</b>
December	2 968	1 857	736	38	74	164	<b>5 851</b>
<b>2005</b>							
March	3 131	742	797	39	51	25	<b>4 798</b>
June	3 589	2 501	970	49	61	70	<b>7 253</b>
September	3 243	5 276	802	42	79	570	<b>10 024</b>
December	3 145	1 555	720	33	65	150	<b>5 679</b>
SEASONALLY ADJUSTED							
<b>2004</b>							
September	3 374	2 888	933	46	54	217	<b>7 659</b>
December	3 266	2 976	824	46	77	234	<b>7 534</b>
<b>2005</b>							
March	2 977	2 996	778	41	58	207	<b>6 324</b>
June	3 343	2 615	910	43	61	237	<b>7 223</b>
September	3 366	2 435	790	40	68	198	<b>6 857</b>
December	3 437	2 462	802	39	68	209	<b>7 262</b>
TREND							
<b>2004</b>							
September	3 274	3 023	883	49	63	224	<b>7 656</b>
December	3 202	2 964	846	45	64	218	<b>7 197</b>
<b>2005</b>							
March	3 170	2 857	829	42	64	223	<b>6 903</b>
June	3 239	2 684	831	41	64	218	<b>6 868</b>
September	3 359	2 504	826	40	65	212	<b>7 013</b>
December	3 469	2 406	809	40	69	207	<b>7 229</b>

(a) For more information refer to paragraphs 4 to 7 of the Explanatory Notes.

## RED MEAT PRODUCED(a), Mutton: All Series

Quarter	New South Wales	Victoria	Queensland	South Australia	Western Australia	Tasmania	Australia
	tonnes	tonnes	tonnes	tonnes	tonnes	tonnes	tonnes
ORIGINAL							
<b>2004</b>							
September	15 267	12 855	4 650	4 977	9 617	873	<b>48 240</b>
December	21 718	18 397	4 953	6 292	12 066	1 922	<b>65 349</b>
<b>2005</b>							
March	20 571	18 408	4 607	6 536	12 880	1 893	<b>64 894</b>
June	19 961	18 367	4 689	4 915	9 279	1 662	<b>58 873</b>
September	14 723	15 022	4 310	4 845	9 515	907	<b>49 322</b>
December	21 115	20 118	5 048	7 671	12 845	1 235	<b>68 032</b>
SEASONALLY ADJUSTED							
<b>2004</b>							
September	17 031	15 626	4 783	5 699	11 147	1 377	<b>56 858</b>
December	19 460	15 915	4 732	5 184	10 502	1 830	<b>57 021</b>
<b>2005</b>							
March	19 876	16 046	4 659	5 849	10 608	1 526	<b>58 266</b>
June	20 841	20 957	4 741	6 184	11 914	1 569	<b>65 876</b>
September	16 599	18 345	4 426	5 554	11 140	1 429	<b>58 478</b>
December	18 825	17 383	4 798	6 292	11 124	1 172	<b>59 104</b>
TREND							
<b>2004</b>							
September	19 096	15 909	4 672	5 658	11 046	1 466	<b>58 034</b>
December	19 162	16 107	4 722	5 586	10 858	1 598	<b>57 958</b>
<b>2005</b>							
March	19 665	17 422	4 699	5 680	10 939	1 647	<b>59 841</b>
June	19 450	18 649	4 632	5 875	11 252	1 534	<b>61 340</b>
September	18 547	18 810	4 624	5 985	11 360	1 383	<b>60 884</b>
December	17 882	18 266	4 657	6 039	11 264	1 275	<b>59 488</b>

(a) For more information refer to paragraphs 4 to 7 of the Explanatory Notes.

Quarter	<i>New South Wales</i>	<i>Victoria</i>	<i>Queensland</i>	<i>South Australia</i>	<i>Western Australia</i>	<i>Tasmania</i>	<b>Australia</b>
	tonnes	tonnes	tonnes	tonnes	tonnes	tonnes	tonnes
ORIGINAL							
<b>2004</b>							
September	17 400	27 334	1 426	11 403	11 183	2 011	<b>70 757</b>
December	20 812	36 524	1 420	18 060	12 380	1 972	<b>91 169</b>
<b>2005</b>							
March	21 422	34 866	1 193	20 252	11 693	2 091	<b>91 516</b>
June	22 916	37 224	1 525	22 441	13 866	2 876	<b>100 849</b>
September	19 616	34 928	1 374	14 877	14 544	2 848	<b>88 187</b>
December	20 621	38 184	1 257	17 409	14 364	2 402	<b>94 237</b>
SEASONALLY ADJUSTED							
<b>2004</b>							
September	17 850	28 538	1 297	15 008	12 012	1 935	<b>76 875</b>
December	20 872	34 441	1 530	17 779	11 681	2 131	<b>88 335</b>
<b>2005</b>							
March	21 177	35 994	1 353	18 234	11 919	2 238	<b>90 862</b>
June	22 532	36 641	1 393	20 124	13 503	2 600	<b>96 836</b>
September	20 170	36 597	1 255	19 625	15 548	2 743	<b>95 866</b>
December	20 640	35 968	1 351	17 168	13 632	2 599	<b>91 451</b>
TREND							
<b>2004</b>							
September	20 352	33 593	1 316	16 101	12 097	2 051	<b>84 430</b>
December	20 837	34 518	1 344	17 055	11 791	2 098	<b>86 879</b>
<b>2005</b>							
March	21 462	35 750	1 355	18 726	12 374	2 307	<b>91 806</b>
June	21 451	36 443	1 345	19 446	13 547	2 533	<b>94 897</b>
September	21 026	36 502	1 325	19 076	14 365	2 659	<b>94 957</b>
December	20 560	36 284	1 314	18 323	14 592	2 698	<b>93 803</b>

(a) For more information refer to paragraphs 4 to 7 of the Explanatory Notes.

## RED MEAT PRODUCED(a), Pig meat: All Series

Quarter	New South Wales	Victoria	Queensland	South Australia	Western Australia	Tasmania	Australia
	tonnes	tonnes	tonnes	tonnes	tonnes	tonnes	tonnes
ORIGINAL							
<b>2004</b>							
September	30 504	17 557	24 936	14 135	11 533	643	<b>99 416</b>
December	28 477	15 230	23 337	16 112	10 220	719	<b>94 180</b>
<b>2005</b>							
March	28 168	14 688	23 049	15 773	10 614	561	<b>92 929</b>
June	31 935	15 265	25 042	17 504	11 105	615	<b>101 546</b>
September	31 385	13 653	23 392	19 178	10 320	600	<b>98 609</b>
December	29 278	13 699	22 107	18 805	9 433	628	<b>94 022</b>
SEASONALLY ADJUSTED							
<b>2004</b>							
September	30 085	17 128	24 154	14 202	11 279	616	<b>97 190</b>
December	29 501	15 548	24 010	17 458	10 913	661	<b>97 918</b>
<b>2005</b>							
March	29 664	15 361	24 483	15 888	10 801	611	<b>96 740</b>
June	29 985	14 609	23 725	16 063	10 493	633	<b>96 289</b>
September	30 979	13 566	22 830	19 262	10 093	594	<b>97 586</b>
December	30 168	13 783	22 848	20 353	10 076	567	<b>96 620</b>
TREND							
<b>2004</b>							
September	30 075	16 833	24 222	14 502	11 148	621	<b>98 024</b>
December	29 616	16 011	24 244	15 011	10 990	632	<b>97 218</b>
<b>2005</b>							
March	29 708	15 160	24 100	15 738	10 753	636	<b>96 885</b>
June	30 126	14 493	23 685	17 003	10 461	617	<b>96 843</b>
September	30 445	13 955	23 145	18 606	10 211	595	<b>96 862</b>
December	30 572	13 481	22 702	20 119	10 006	579	<b>96 985</b>

(a) For more information refer to paragraphs 4 to 7 of the Explanatory Notes.



## TOTAL RED MEAT PRODUCED(a): All Series

Quarter	New South Wales	Victoria	Queensland	South Australia	Western Australia	Tasmania	Australia
	tonnes	tonnes	tonnes	tonnes	tonnes	tonnes	tonnes
ORIGINAL							
<b>2004</b>							
September	179 025	151 884	322 582	48 184	62 615	16 704	<b>781 405</b>
December	180 276	165 284	276 956	66 300	67 058	18 916	<b>775 163</b>
<b>2005</b>							
March	179 140	157 189	252 197	67 686	67 819	20 097	<b>744 496</b>
June	194 371	166 975	318 954	69 457	70 600	19 866	<b>840 608</b>
September	161 901	143 467	313 302	53 948	60 909	16 954	<b>750 870</b>
December	174 267	160 507	270 434	67 113	67 173	17 453	<b>757 313</b>
SEASONALLY ADJUSTED							
<b>2004</b>							
September	183 720	158 281	285 947	56 719	66 477	19 646	<b>782 219</b>
December	179 204	159 677	286 343	63 968	62 501	19 412	<b>769 624</b>
<b>2005</b>							
March	182 463	157 234	297 520	63 065	64 682	18 077	<b>784 955</b>
June	187 193	166 511	298 712	66 748	75 762	18 762	<b>801 653</b>
September	166 298	150 906	281 148	63 222	64 779	19 771	<b>756 318</b>
December	172 863	154 375	277 973	64 817	62 672	17 998	<b>750 004</b>
TREND							
<b>2004</b>							
September	176 860	163 172	284 141	58 417	64 842	19 366	<b>774 245</b>
December	180 491	161 013	290 301	60 860	65 141	19 031	<b>781 333</b>
<b>2005</b>							
March	182 555	160 235	295 120	63 628	67 407	18 815	<b>787 187</b>
June	179 825	159 074	292 926	64 802	68 858	18 823	<b>782 122</b>
September	174 695	156 444	286 212	64 759	67 515	18 882	<b>769 020</b>
December	170 095	153 649	278 009	64 653	64 320	18 791	<b>752 405</b>

(a) For more information refer to paragraphs 4 to 7 of the Explanatory Notes.

## CHICKEN MEAT PRODUCED(a): All Series

Quarter	New South Wales	Victoria	Queensland	South Australia	Western Australia	Australia
	tonnes	tonnes	tonnes	tonnes	tonnes	tonnes
ORIGINAL						
<b>2004</b>						
September	64 322	50 354	30 849	np	np	<b>179 282</b>
December	69 342	56 172	34 816	np	np	<b>195 330</b>
<b>2005</b>						
March	59 514	54 924	31 001	np	np	<b>178 055</b>
June	72 537	58 058	32 002	np	np	<b>197 362</b>
September	68 926	50 901	36 896	np	np	<b>188 782</b>
December	68 920	54 125	34 239	np	np	<b>190 998</b>
SEASONALLY ADJUSTED						
<b>2004</b>						
September	64 422	51 995	30 956	np	np	<b>181 234</b>
December	67 851	54 273	32 725	np	np	<b>189 143</b>
<b>2005</b>						
March	61 071	54 846	32 157	np	np	<b>180 963</b>
June	73 210	58 257	32 909	np	np	<b>199 466</b>
September	67 923	53 273	36 511	np	np	<b>189 805</b>
December	67 897	52 364	32 576	np	np	<b>186 178</b>
TREND						
<b>2004</b>						
September	64 315	51 831	31 276	np	np	<b>181 237</b>
December	65 420	54 087	31 892	np	np	<b>185 350</b>
<b>2005</b>						
March	66 679	55 855	32 810	np	np	<b>189 231</b>
June	68 178	55 807	33 715	np	np	<b>191 313</b>
September	69 033	54 532	34 243	np	np	<b>191 080</b>
December	69 345	52 828	34 326	np	np	<b>189 501</b>

np not available for publication but included in totals where applicable, unless otherwise indicated

(a) For more information refer to paragraphs 8 and 9 of the Explanatory Notes.

## MEAT PRODUCED(a): Original

<i>Financial year</i>	<i>New South Wales</i> tonnes	<i>Victoria</i> tonnes	<i>Queensland</i> tonnes	<i>South Australia</i> tonnes	<i>Western Australia</i> tonnes	<i>Tasmania</i> tonnes	<i>Australia</i> tonnes
BEEF							
2002-03	471 498	370 223	946 950	88 362	105 074	51 376	<b>2 034 613</b>
2003-04	401 926	361 323	974 715	86 755	116 555	55 454	<b>1 997 848</b>
2004-05	440 720	363 226	1 046 410	93 049	131 407	56 859	<b>2 132 810</b>
VEAL							
2002-03	16 493	16 007	4 202	341	300	826	<b>38 220</b>
2003-04	14 277	15 076	4 253	234	258	947	<b>35 093</b>
2004-05	12 941	11 393	3 451	176	250	886	<b>29 147</b>
MUTTON							
2002-03	106 106	67 552	20 741	30 893	35 431	7 495	<b>268 218</b>
2003-04	73 335	60 055	19 021	23 369	37 094	6 839	<b>219 713</b>
2004-05	77 517	68 026	18 899	22 721	43 842	6 351	<b>237 356</b>
LAMB							
2002-03	85 304	130 699	6 284	60 114	39 568	7 439	<b>329 407</b>
2003-04	82 149	130 772	5 127	67 753	47 212	8 436	<b>341 448</b>
2004-05	82 550	135 948	5 564	72 157	49 122	8 950	<b>354 290</b>
PIG MEAT							
2002-03	140 247	72 105	94 434	64 147	45 490	2 715	<b>419 555</b>
2003-04	129 800	70 289	99 774	57 960	45 190	2 457	<b>405 898</b>
2004-05	119 085	62 740	96 365	63 525	43 471	2 538	<b>388 070</b>
TOTAL RED MEAT							
2002-03	819 648	656 586	1 072 611	243 857	225 863	69 851	<b>3 090 013</b>
2003-04	701 486	637 515	1 102 890	236 071	246 309	74 134	<b>3 000 002</b>
2004-05	732 812	641 332	1 170 689	251 627	268 092	75 584	<b>3 141 673</b>
CHICKEN MEAT							
2002-03	256 445	204 440	114 327	np	np	np	<b>689 826</b>
2003-04	247 755	205 348	117 889	np	np	np	<b>693 602</b>
2004-05	265 716	219 508	128 669	np	np	np	<b>750 029</b>

np not available for publication but included in totals where applicable, unless otherwise indicated

(a) For more information refer to paragraphs 4 to 9 in the Explanatory Notes.

Period	FRESH, CHILLED OR FROZEN MEAT									PROCESSED MEAT	
	<i>Beef bone-in</i>	<i>Beef bone-out</i>	<i>Veal bone-in</i>	<i>Veal bone-out</i>	<i>Mutton bone-in</i>	<i>Mutton bone-out</i>	<i>Lamb bone-in</i>	<i>Lamb bone-out</i>	<i>Pork</i>	<i>Bacon and ham</i>	<i>Canned meat</i>
	tonnes	tonnes	tonnes	tonnes	tonnes	tonnes	tonnes	tonnes	tonnes	tonnes	tonnes
<b>2002-03</b>	37 467	894 430	3 675	6 458	109 345	52 275	87 907	14 082	62 927	351	17 048
<b>2003-04</b>	32 069	852 412	2 893	6 262	86 539	42 722	100 537	18 326	50 667	558	24 705
<b>2004-05</b>	44 636	959 391	3 320	5 775	101 740	41 790	106 518	21 699	43 495	449	22 835
<b>2004</b>											
September	7 208	245 649	767	2 286	17 892	9 203	18 130	3 866	11 842	114	5 783
December	12 022	252 729	792	1 357	27 898	11 686	29 707	5 072	10 741	136	6 293
<b>2005</b>											
March	12 372	200 576	618	830	29 372	9 645	26 923	5 348	10 036	72	4 985
June	13 035	260 437	1 144	1 302	26 578	11 257	31 758	7 413	10 876	127	5 774
September	14 627	227 461	1 029	2 110	18 666	7 986	27 520	6 319	10 528	105	5 734
December	13 805	230 113	825	1 514	32 123	13 047	32 961	6 349	10 121	90	5 506

(a) For more information refer to paragraphs 10 and 11 of the Explanatory Notes.

## EXPORTS OF LIVE SHEEP AND CATTLE, Australia(a): Original

Period	Number	Gross weight	Gross value	Unit value
	'000	'000 tonnes	\$'000	\$
SHEEP				
<b>2002-03</b>	5 843.2	273.0	408 235	69.87
<b>2003-04</b>	3 842.7	188.2	266 457	69.34
<b>2004-05</b>	3 233.2	166.1	206 678	63.92
<b>2004</b>				
September	849.4	48.5	58 088	68.38
December	839.8	42.2	53 946	64.24
<b>2005</b>				
March	904.6	44.3	55 415	61.26
June	639.4	31.1	39 228	61.35
September	1 173.7	60.0	82 397	70.20
December	1 465.9	72.1	101 410	69.18
CATTLE				
<b>2002-03</b>	976.6	362.5	569 288	582.95
<b>2003-04</b>	581.5	192.0	317 850	546.65
<b>2004-05</b>	573.7	191.7	374 060	652.01
<b>2004</b>				
September	171.9	57.3	111 885	650.69
December	131.0	45.3	95 115	725.95
<b>2005</b>				
March	120.2	40.6	77 020	640.98
June	150.6	48.5	90 040	597.97
September	157.6	55.7	96 100	609.81
December	102.8	33.4	73 944	719.55

(a) For more information refer to paragraph 12 of the Explanatory Notes.

## WHOLE MILK INTAKE, By Factories(a)(b): All Series

	<i>New South Wales</i>	<i>Victoria</i>	<i>Queensland</i>	<i>South Australia</i>	<i>Western Australia</i>	<i>Tasmania</i>	<b><i>Australia</i></b>
<i>Quarter</i>	ML	ML	ML	ML	ML	ML	ML
ORIGINAL							
<b>2004</b>							
June	274	1 070	147	156	91	95	<b>1 832</b>
September	307	1 535	167	160	102	98	<b>2 369</b>
December	347	2 314	166	204	110	240	<b>3 380</b>
<b>2005</b>							
March	289	1 617	145	165	88	162	<b>2 466</b>
June	274	1 147	142	149	96	101	<b>1 909</b>
September	309	1 556	168	149	103	103	<b>2 387</b>
SEASONALLY ADJUSTED							
<b>2004</b>							
June	306	1 649	159	174	95	149	<b>2 532</b>
September	302	1 628	158	170	97	149	<b>2 504</b>
December	304	1 580	156	170	102	150	<b>2 462</b>
<b>2005</b>							
March	306	1 708	152	168	96	148	<b>2 578</b>
June	307	1 763	153	170	100	157	<b>2 650</b>
September	302	1 645	157	158	99	157	<b>2 518</b>
TREND							
<b>2004</b>							
June	307	1 626	161	174	98	150	<b>2 516</b>
September	303	1 617	157	171	97	149	<b>2 494</b>
December	304	1 641	155	170	99	149	<b>2 518</b>
<b>2005</b>							
March	305	1 682	154	169	99	151	<b>2 560</b>
June	305	1 708	154	166	99	154	<b>2 586</b>
September	304	1 707	156	162	99	157	<b>2 585</b>

(a) For more information refer to paragraph 13 of the Explanatory Notes.

(b) Data for Australian Capital Territory are included in New South Wales; data for Northern Territory are included in South Australia.

Source: Original series data from Dairy Australia.

## MARKET MILK SALES, By Factories(a)(b): All Series

	<i>New South Wales</i>	<i>Victoria</i>	<i>Queensland</i>	<i>South Australia</i>	<i>Western Australia</i>	<i>Tasmania</i>	<b><i>Australia</i></b>
<i>Quarter</i>	ML	ML	ML	ML	ML	ML	ML
ORIGINAL							
<b>2004</b>							
June	158	120	103	49	50	13	<b>493</b>
September	160	122	108	51	54	13	<b>508</b>
December	158	123	107	50	55	14	<b>506</b>
<b>2005</b>							
March	159	118	106	48	52	13	<b>497</b>
June	164	121	109	49	54	13	<b>511</b>
September	167	123	112	50	56	14	<b>520</b>
SEASONALLY ADJUSTED							
<b>2004</b>							
June	157	121	103	49	50	13	<b>493</b>
September	158	120	105	49	52	13	<b>499</b>
December	159	123	107	51	55	13	<b>507</b>
<b>2005</b>							
March	161	122	108	49	54	13	<b>508</b>
June	163	120	109	49	54	13	<b>509</b>
September	164	120	109	49	55	13	<b>510</b>
TREND							
<b>2004</b>							
June	157	120	104	49	52	13	<b>495</b>
September	158	121	105	50	52	13	<b>500</b>
December	159	122	107	50	53	13	<b>504</b>
<b>2005</b>							
March	161	122	108	50	54	13	<b>508</b>
June	163	121	109	49	54	13	<b>509</b>
September	164	120	109	49	54	13	<b>510</b>

(a) For more information refer to paragraph 13 of the Explanatory Notes.

(b) Data for Australian Capital Territory are included in New South Wales; data for Northern Territory are included in South Australia.

Source: Original series data from Dairy Australia.

## BROKERS AND DEALERS RECEIVALS OF TAXABLE WOOL(a): All Series

Quarter	New South Wales	Victoria	Queensland	South Australia	Western Australia	Tasmania	Australia	% of total received by brokers
	tonnes	tonnes	tonnes	tonnes	tonnes	tonnes	tonnes	%
ORIGINAL								
<b>2004</b>								
September	42 313	29 099	6 706	19 936	27 521	1 896	<b>127 471</b>	84.0
December	43 432	36 591	4 333	19 815	28 563	3 988	<b>136 722</b>	80.0
<b>2005</b>								
March	32 051	28 550	3 462	14 438	32 900	2 251	<b>113 652</b>	81.2
June	31 397	26 120	5 716	13 327	18 070	2 747	<b>97 376</b>	77.0
September	42 735	29 417	7 562	17 387	28 538	3 682	<b>129 320</b>	79.7
December	41 196	36 097	4 655	18 460	31 371	3 875	<b>135 655</b>	79.5
SEASONALLY ADJUSTED								
<b>2004</b>								
September	35 029	28 572	4 948	16 903	27 041	1 918	<b>114 412</b>	..
December	38 265	27 836	5 431	15 867	25 806	2 956	<b>116 161</b>	..
<b>2005</b>								
March	36 790	30 543	4 414	16 144	26 952	2 963	<b>117 806</b>	..
June	39 360	35 419	5 391	19 725	27 458	3 114	<b>130 468</b>	..
September	35 752	29 083	5 675	14 809	28 148	3 672	<b>117 138</b>	..
December	36 270	27 539	5 861	14 802	28 328	2 838	<b>115 639</b>	..
TREND								
<b>2004</b>								
September	37 095	29 435	4 622	16 478	27 342	2 791	<b>117 763</b>	..
December	37 174	29 312	4 866	16 483	26 592	2 677	<b>117 103</b>	..
<b>2005</b>								
March	37 740	31 019	5 081	17 109	26 615	2 934	<b>120 498</b>	..
June	37 692	31 927	5 216	17 123	27 431	3 261	<b>122 650</b>	..
September	36 900	30 657	5 576	16 281	28 038	3 262	<b>120 713</b>	..
December	36 281	28 564	5 932	15 157	28 327	3 185	<b>117 447</b>	..

.. not applicable

(a) For more information refer to paragraphs 4, 14 and 15 of the Explanatory Notes.



<i>Financial year</i>	<i>New South Wales</i>	<i>Victoria</i>	<i>Queensland</i>	<i>South Australia</i>	<i>Western Australia</i>	<i>Tasmania</i>	<b><i>Australia</i></b>
.....							
WHOLE MILK INTAKE BY FACTORIES (b) (ML)							
2002-03	1 301	6 585	720	733	404	585	<b>10 328</b>
2003-04	1 271	6 434	674	703	403	590	<b>10 075</b>
2004-05	1 218	6 613	619	679	396	600	<b>10 125</b>
.....							
MARKET MILK SALES BY FACTORIES (b) (ML)							
2002-03	616	473	404	181	200	51	<b>1 925</b>
2003-04	628	484	411	196	204	52	<b>1 976</b>
2004-05	641	485	429	199	215	53	<b>2 022</b>
.....							
BROKERS AND DEALERS RECEIVALS OF TAXABLE WOOL (Tonnes)							
2002-03	168 138	128 444	18 287	65 054	108 739	14 357	<b>503 020</b>
2003-04	140 815	119 667	17 127	66 982	109 853	13 138	<b>467 582</b>
2004-05	149 193	120 360	20 217	67 516	107 054	10 881	<b>475 221</b>

(a) For more information refer to paragraphs 13 to 15 of the Explanatory Notes.

(b) Data for Australian Capital Territory are included in New South Wales; data for Northern Territory are included in South Australia.

Source: Original series milk data from Dairy Australia.

# WHAT IF...? REVISIONS TO TREND ESTIMATES

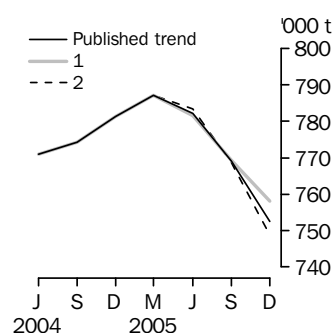
## EFFECT OF NEW SEASONALLY ADJUSTED ESTIMATES ON TREND ESTIMATES

### TREND REVISIONS

Recent seasonally adjusted and trend estimates are likely to be revised when original estimates for subsequent quarters become available. The approximate effects of possible scenarios on trend estimates are presented below. These illustrate the impact on trend estimates if next quarter's seasonally adjusted estimate either rises or falls by a certain percentage (based on the historical average of movements in seasonally adjusted estimates).

For further information, see paragraphs 20 to 22 of the Explanatory Notes.

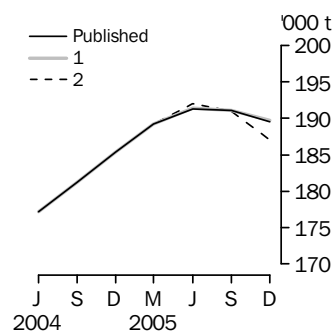
### RED MEAT PRODUCTION



#### WHAT IF NEXT QUARTER'S SEASONALLY ADJUSTED ESTIMATE:

	<u>Trend as published</u>		<u>(1) rises by 2.2% on Dec Qtr 2005</u>		<u>(2) falls by 2.2% on Dec Qtr 2005</u>	
	number	% change	number	% change	number	% change
Dec Qtr 2004	781 333	0.9	781 333	0.9	781 333	0.9
Mar Qtr 2005	787 187	0.7	787 188	0.7	787 188	0.7
Jun Qtr 2005	782 122	-0.6	781 487	-0.7	783 425	-0.5
Sep Qtr 2005	769 020	-1.7	769 300	-1.6	768 595	-1.9
Dec Qtr 2005	752 405	-2.2	758 153	-1.4	748 809	-2.6

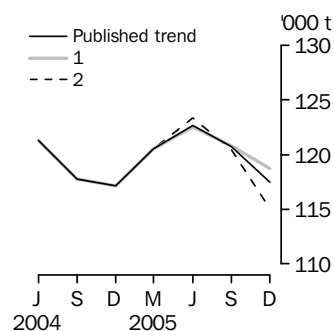
### CHICKEN MEAT PRODUCTION



#### WHAT IF NEXT QUARTER'S SEASONALLY ADJUSTED ESTIMATE:

	<u>Trend as published</u>		<u>(1) rises by 2.6% on Dec Qtr 2005</u>		<u>(2) falls by 2.6% on Dec Qtr 2005</u>	
	number	% change	number	% change	number	% change
Dec Qtr 2004	185 350	2.3	185 356	2.3	185 356	2.3
Mar Qtr 2005	189 231	2.1	189 232	2.1	189 232	2.1
Jun Qtr 2005	191 313	1.1	191 374	1.1	191 943	1.4
Sep Qtr 2005	191 080	-0.1	191 105	-0.1	190 899	-0.5
Dec Qtr 2005	189 501	-0.8	189 716	-0.7	186 975	-2.1

### WOOL RECEIVALS

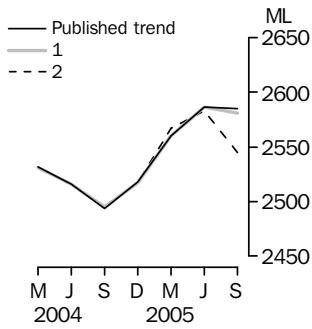


#### WHAT IF NEXT QUARTER'S SEASONALLY ADJUSTED ESTIMATE:

	<u>Trend as published</u>		<u>(1) rises by 5.6% on Dec Qtr 2005</u>		<u>(2) falls by 5.6% on Dec Qtr 2005</u>	
	number	% change	number	% change	number	% change
Dec Qtr 2004	117 103	-0.6	117 104	-0.6	117 104	-0.6
Mar Qtr 2005	120 498	2.9	120 498	2.9	120 498	2.9
Jun Qtr 2005	122 650	1.8	122 556	1.7	123 317	2.3
Sep Qtr 2005	120 713	-1.6	120 791	-1.4	120 479	-2.3
Dec Qtr 2005	117 447	-2.7	118 753	-1.7	115 065	-4.5

# WHAT IF...? REVISIONS TO TREND ESTIMATES *continued*

## WHOLE MILK INTAKE BY FACTORIES



### WHAT IF NEXT QUARTER'S SEASONALLY ADJUSTED ESTIMATE:

	<i>Trend as published</i>		<i>(1) rises by 2.5% on Sep Qtr 2005</i>		<i>(2) falls by 2.5% on Sep Qtr 2005</i>	
	number	% change	number	% change	number	% change
Sep Qtr 2004	2 494	-0.9	2 495	-0.8	2 495	-0.8
Dec Qtr 2004	2 518	1.0	2 517	0.9	2 517	0.9
Mar Qtr 2005	2 560	1.7	2 560	1.7	2 567	2.0
Jun Qtr 2005	2 586	1.0	2 586	1.0	2 583	0.6
Sep Qtr 2005	2 585	—	2 581	-0.2	2 545	-1.5

— nil or rounded to zero (including null cells)

## EXPLANATORY NOTES

### INTRODUCTION

**1** This publication contains information on livestock slaughterings, meat production, exports of live sheep and live cattle, exports of fresh, frozen and processed meat, and whole milk intake by factories, market milk sales by factories and receivals of taxable wool by wool brokers and dealers.

**2** The figures shown in this publication have been revised where necessary and as a consequence may not agree with similar data shown in previous publications.

**3** Where figures have been rounded, discrepancies may occur between sums of the component items and totals.

**4** Unless indicated otherwise, Australian totals include data for all states and both territories.

### LIVESTOCK SLAUGHTERINGS AND MEAT PRODUCTION

**5** The statistics on slaughterings for red meat production are based on a monthly collection from abattoirs and other major slaughtering establishments and include estimates of animals slaughtered on farms and by country butchers and other small slaughtering establishments.

**6** Red meat is shown in carcass weight and excludes offal.

**7** Care should be taken when using this information as the figures only relate to slaughterings for human consumption and do not include animals condemned, slaughtered for pet food or those killed for boiling down.

**8** Poultry slaughterings and meat produced statistics have been compiled from quarterly returns supplied by commercial poultry slaughtering establishments and comprise boilers, fryers and roasters. Many small producers are excluded from the collection; however, the statistics represent a high level of coverage. Tasmanian, Northern Territory and Australian Capital Territory data are excluded from the Australian total.

**9** Chicken meat is shown in dressed weight of whole birds, pieces and giblets. Some slaughterings and meat production statistics for 'Ducks and Drakes' and 'Other Fowls and Turkeys' are available by contacting the ABS on Hobart (03) 6222 5838 or by writing to GPO Box 66, Hobart Tasmania 7001 (Attention: Agriculture Section).

### EXPORTS OF FRESH, FROZEN AND PROCESSED MEAT

**10** Table 20 shows exports of fresh, frozen and processed meat. International trade statistics are compiled by the ABS from information submitted by exporters and importers or their agents to the Australian Customs Service. Factors can be applied to beef, veal, mutton and lamb bone-out figures to derive bone-in carcass weight which, when added to bone-in figures, shows total exports in carcass weight. The factor for beef and veal is 1.5 and for mutton and lamb, 2.0. This information is sourced from Department of Agriculture, Fisheries and Forestry – Australia.

**11** Beef also includes buffalo meat. Bacon and ham shown is the cured carcass weight of smoked or cooked bacon and ham. It also includes the stated net weight of packs of canned bacon and ham. Canned meat is shown as the canned weight and excludes canned bacon and ham.

### LIVE SHEEP AND CATTLE EXPORTS

**12** Table 21 contains statistics of the number of live sheep and cattle exported, the gross weight, gross value and unit value. The unit value is obtained by dividing the gross value by the number of animals exported. Sheep and cattle exported for breeding are excluded.

### MILK

**13** Tables 2, 22, 23 and 25 contain statistics collected by Dairy Australia. Whole milk intake by factories includes the whole milk equivalent of farm cream intake. Market milk sales includes white, flavoured, high and low fat milk and UHT milk. Interstate transfers of UHT milk have been included in their state of destination.

## EXPLANATORY NOTES *continued*

### WOOL RECEIVALS

**14** The statistics in tables 2, 24 and 25 show the amount of taxable wool received by brokers and purchased by dealers from wool producers. It excludes wool received by brokers on which tax has already been paid by other dealers (private buyers) or brokers.

**15** The information shown is on the basis of the state in which wool has actually been received and does not necessarily reflect the production of wool in that state.

### SEASONAL ADJUSTMENT

**16** Seasonal adjustment is a means of removing the estimated effects of normal seasonal variation from the series so that the effects of other influences can be more clearly recognised.

**17** In the seasonal adjustment of the livestock estimates, account has been taken of both normal seasonal factors and 'trading day' effects, where significant, (arising from the varying length of each quarter and the varying numbers of Sundays, Mondays, Tuesdays etc. in the quarter). Adjustments are also made for the effects of change in the date of Easter holidays, again, where significant. Seasonal adjustment does not remove from the series the effect of irregular influences (e.g. abnormal weather, industrial disputes).

**18** The state component series have been seasonally adjusted independently. Therefore, the adjusted components may not add to the Australian group totals.

**19** In this publication the seasonally adjusted estimates are produced by the concurrent seasonal adjustment method which takes account of the latest available original estimates. This method improves the estimation of seasonal factors and therefore, the seasonally adjusted and trend estimates for the current and previous quarters. As a result of this improvement, revisions to the seasonally adjusted and trend estimates will be observed for recent periods. In most instances the only noticeable revisions will be to the previous quarter and the same quarter one year ago. A more detailed review is conducted annually prior to the September quarter release, using data up to and including the June quarter. The concurrent seasonal adjustment methodology replaces the forward factor methodology used previously.

### TREND ESTIMATES

**20** A trend estimate is obtained by reducing the irregular component from the seasonally adjusted series. In this publication trend estimates are generally derived by applying a 7-term Henderson moving average to the seasonally adjusted series. The 7-term Henderson, (like all Henderson averages) is symmetric, but as the end of a time series is approached, asymmetric forms of the average are applied. Unlike the weights of the standard 7-term Henderson moving average, the weights employed here have been tailored to suit the particular characteristics of individual series. While the asymmetric weights enable the trend to be calculated for recent quarters, it does result in revisions to the estimates for the most recent three quarters as additional observations become available. Revisions of trend estimates will also occur with revisions to the original data and re-estimation of seasonal factors.

**21** Sensitivity analysis indicates the potential magnitude and direction of revisions created to the last three estimates. It aims to show how a specified movement in the seasonally adjusted data in the next period will affect the trend path of the time series. By showing how sensitive the trend estimates are to the addition of new data, the analysis provides information which can be used in the assessment of the trend's stability.

**22** For further information, see *Information Paper: A Guide to Interpreting Time Series – Monitoring 'Trends', an Overview* (cat. no. 1348.0) or contact the Assistant Director, Time Series Analysis on Canberra (02) 6252 6345.

## EXPLANATORY NOTES *continued*

---

### RELATED PUBLICATIONS

**23** Current publications and other products released by the ABS are listed in the *Catalogue of Publications and Products* (cat. no. 1101.0). The Catalogue is available from any ABS office or the ABS web site <<http://www.abs.gov.au>>. The ABS also issues a daily Release Advice on the web site which details products to be released in the week ahead.

### GENERAL ACKNOWLEDGMENT

**24** ABS publications draw extensively on information provided freely by individuals, businesses, governments and other organisations. Their continued cooperation is very much appreciated. Without it, the wide range of statistics published by the ABS would not be available. Information received by the ABS is treated in strict confidence as required by the *Census and Statistics Act 1905*.



## FOR MORE INFORMATION . . .

- INTERNET*      **www.abs.gov.au** the ABS web site is the best place for data from our publications and information about the ABS.
- LIBRARY*      A range of ABS publications are available from public and tertiary libraries Australia wide. Contact your nearest library to determine whether it has the ABS statistics you require, or visit our web site for a list of libraries.

## INFORMATION AND REFERRAL SERVICE

Our consultants can help you access the full range of information published by the ABS that is available free of charge from our web site, or purchase a hard copy publication. Information tailored to your needs can also be requested as a 'user pays' service. Specialists are on hand to help you with analytical or methodological advice.

- PHONE*            1300 135 070
- EMAIL*            client.services@abs.gov.au
- FAX*                1300 135 211
- POST*               Client Services, ABS, GPO Box 796, Sydney NSW 2001

## FREE ACCESS TO STATISTICS

All ABS statistics can be downloaded free of charge from the ABS web site.

- WEB ADDRESS*    [www.abs.gov.au](http://www.abs.gov.au)



2721500012055

ISSN 0728 4047

RRP \$26.00